

CUSTOM CODE

4

STANDARD CASE PRICE

| Oak | Maple | Cherry/Qsawn |
|--------|--------|--------------|
| \$1670 | \$1890 | \$2035 |

PREMIUM FINISH PRICE

\$ 15 Distressing
 \$ 165 Paint, Passages, Glaze, or Antique Detailing
 \$ 240 Combination, Glaze w/Olde World or Weathered

DIMENSION INCREASE PRICE

Do not include decrease inches to calculate price.

| 2" | 4" | 6" | 8" | 10" | 12" | 14" | 16" | 18" | 20" |
|-------|-------|-------|-------|-------|-------|-------|-------|-------|-------|
| \$180 | \$225 | \$285 | \$345 | \$420 | \$495 | \$540 | \$585 | \$645 | \$690 |

STANDARD DIMENSIONS & CAPABILITIES

| Minimum | 70H | 40W | 10D |
|----------|------|------|-------|
| Standard | 80H | 48W | 12D |
| Maximum | 96H* | 60W* | 22.5D |

* Refer to important Custom Notes below.

OPENING HEIGHTS BY STYLE

| | 06 | 11 | 17 | 20 | 33 | 44 | 51 | 54 | 65 |
|---|-------|-------|-------|-------|-------|-------|-------|-------|-------|
| A | 54.25 | 53.75 | 54.25 | 53.75 | 52.25 | 53.75 | 53.75 | 53.75 | 54.75 |
| B | 13 | 9.625 | 13.75 | 15.5 | 15 | 15 | 15 | 15.25 | 16.25 |
| C | 54.25 | 53.75 | 54.25 | 53.75 | 52.25 | 53.75 | 53.75 | 53.75 | 54.75 |

IMPORTANT CUSTOM NOTES

If the height is increased to 84H or 52W or more

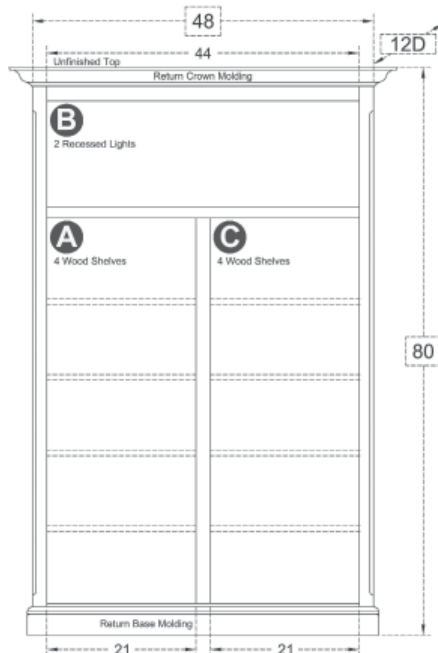
- then a Split Horizontal (CAHZ02 \$330 | \$330 | \$330) will be added to create a two piece cabinet top and bottom.

If the height is increased to 84H or more

- then a Face Frame Rail and Middle Molding (CAFF28 \$90 | \$120 | \$135) will be added to cover the split.

The top is unfinished

- then a Finished Top for Rectangular Cabinets (TOFT70 \$420 | \$495 | \$555) is optional.



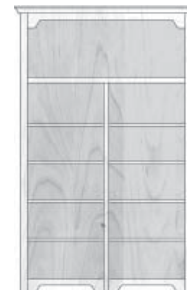
Exterior View by Style Standard size with molding on: 1 side | 2 sides



B06086
49.8125W | 51.625W



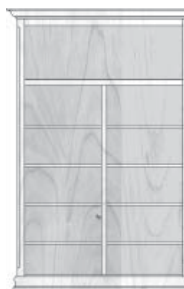
B11086
50.75W | 53.5W



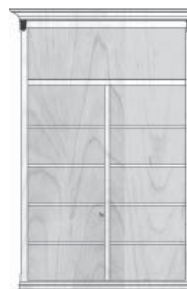
B17086
49.625W | 51.25W



B20086
50.1875W | 52.375W



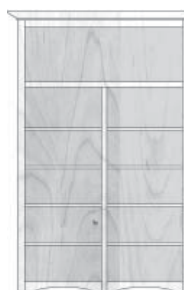
B33086
51.0625W | 54.125W



B44086
51.0625W | 54.125W



B51086
51.0625W | 54.125W



B54086
50.8125W | 53.625W



B65086
50.125W | 52.25W
With optional Metro Legs (CAPL50) 82.5H