

**CUSTOM CODE**

7

**STANDARD CASE PRICE**

Oak	Maple	Cherry/Qsawn
\$2300	\$2665	\$2820

**PREMIUM FINISH PRICE**

\$ 15 Distressing  
 \$ 270 Paint, Passages, Glaze, or Antique Detailing  
 \$ 420 Combination, Glaze w/Olde World or Weathered

**DIMENSION INCREASE PRICE**

Do not include decrease inches to calculate price.

2"	4"	6"	8"	10"	12"	14"	16"	18"	20"
\$360	\$405	\$450	\$510	\$570	\$630	\$690	\$750	\$810	\$870

**STANDARD DIMENSIONS & CAPABILITIES**

Minimum	70H	24.5ATW
Standard	80H	27.25ATW
Maximum	96H*	36ATW

\* Refer to important Custom Notes below.

**OPENING HEIGHTS BY STYLE**

	06	11	17	20	33	44	51	54	65
A	22.5	22	22.5	22	20.5	21	21	22	22.5
B	47.25	45.5	48	47.25	46.75	46.75	46.75	47	48

**IMPORTANT CUSTOM NOTES**

**The top is unfinished**

- then a Finished Top for Corner Cabinets (TOCC70 \$420 | \$495 | \$555) is optional.

**If a finished top is added**

- then a Change Recessed Halogen Light to Puck Light (ELCH33 \$15 | \$15 | \$15) option will be added for each light.

**If the opening width exceeds 23W in Section A**

- then a Glass Hinged Door (DOGL10 \$195 | \$225 | \$240) will be added.

**If the opening width exceeds 23W in Section B**

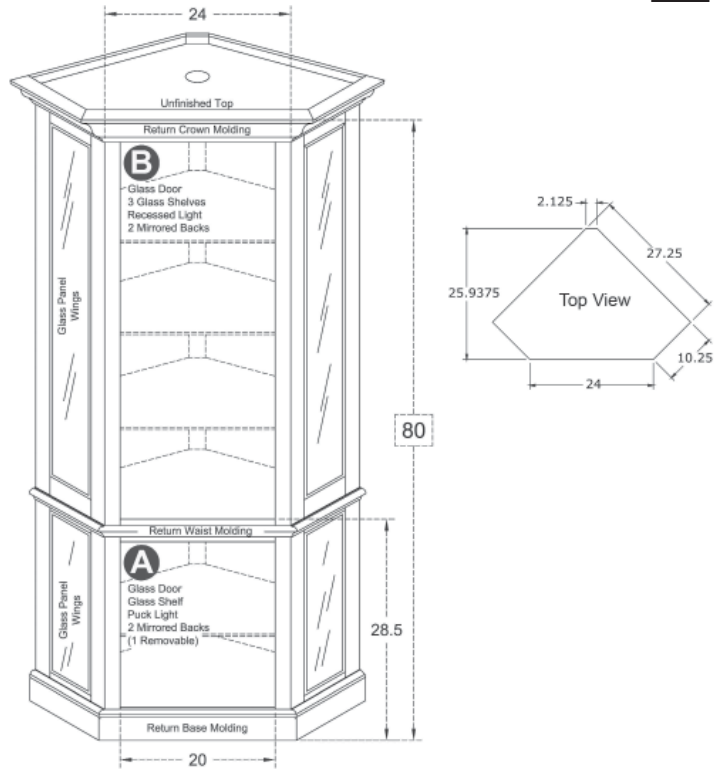
- then a Glass Hinged Door (DOGL30 \$300 | \$345 | \$375) will be added.

**If the height is increased to 84H or more**

- then a Split Horizontal (CAHZ02 \$330 | \$330 | \$330) will be added to create a two piece cabinet top and bottom.
- then a Face Frame Rail and Middle Molding (CAFF28 \$90 | \$120 | \$135) will be added to cover the split.

**If the height is increased**

- then the maximum opening height is 56H due to the mirror back.



**Exterior View by Style** Standard size with molding on: 1 side | 2 sides

