

**CUSTOM CODE**

4

**STANDARD CASE PRICE**

	Oak	Maple	Cherry/Qsawn
W	\$1735	\$1970	\$2080
C	\$2005	\$2285	\$2410
E	\$2190	\$2520	\$2680

**PREMIUM FINISH PRICE**

- \$ 15 Distressing
- \$ 165 Paint, Passages, Glaze, or Antique Detailing
- \$ 240 Combination, Glaze w/Olde World or Weathered

**DIMENSION INCREASE PRICE**

Do not include decrease inches to calculate price.

2"	4"	6"	8"	10"	12"	14"	16"	18"	20"
\$180	\$225	\$285	\$345	\$420	\$495	\$540	\$585	\$645	\$690

**STANDARD DIMENSIONS & CAPABILITIES**

Minimum	40H	56W	12D
Standard	50H	66W	12D
Maximum	65H	76W*	22.5D

\* Refer to important Custom Notes below.

**OPENING HEIGHTS BY STYLE**

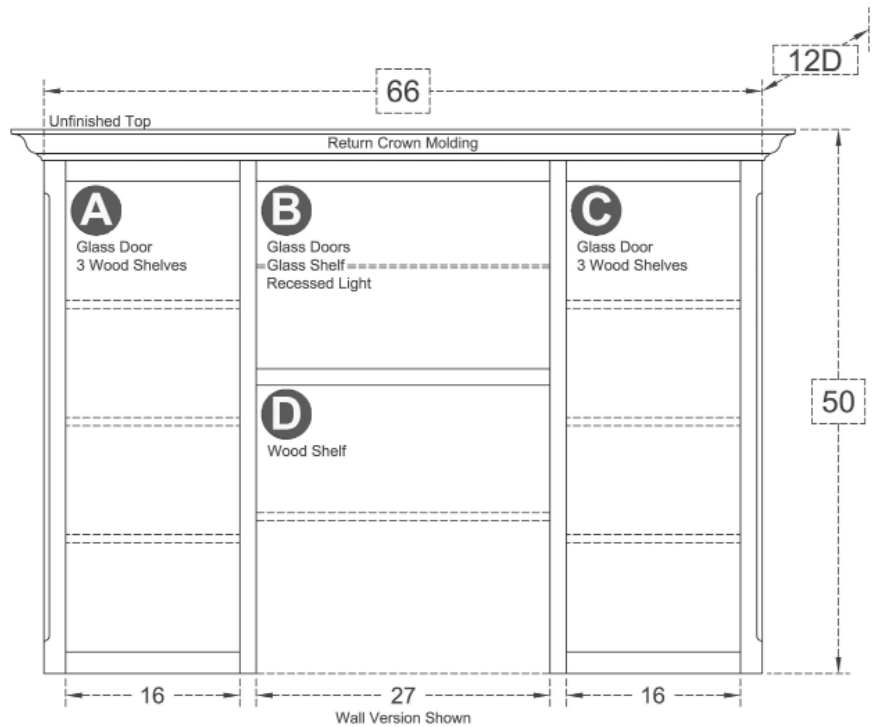
	06	11	17	20	33	44	51	54	65
A	43.75	42	44.5	43.75	43.25	43.25	43.25	43.5	44.5
B	17.75	16	18.5	17.75	17.25	17.25	17.25	17.5	18.5
C	43.75	42	44.5	43.75	43.25	43.25	43.25	43.5	44.5
D	26.5	26.5	26.5	26.5	26.5	26.5	26.5	26.5	26.5

**IMPORTANT CUSTOM NOTES**

- If the width is increased by more than 7W in Section A or C**
- then a Glass Hinged Door (DOGL30 \$300 | \$345 | \$375) will be added to create a pair of doors.

- If increasing the width by more than 10W in Section B**
- then a Halogen Recessed Light (ELLI32 \$60 | \$60 | \$60) is recommended..

- If the width is increased by more than 10W in Sections B and D**
- then a Vertical Divider (CAVD24 \$120 | \$135 | \$150) will be added for support. The standard shelves will automatically be split so that there are shelves on each side of the Vertical Divider. There is no charge for splitting the shelves.



**Exterior View by Style** Standard size with molding on: 1 side | 2 sides



**HO06388**  
67.8125W | 69.625W



**HO11388**  
68.75W | 71.5W



**HO17388**  
67.625W | 69.25W



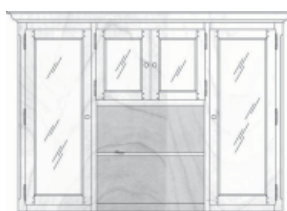
**HO20388**  
68.1875W | 70.375W



**HO33388**  
69.0625W | 72.125W



**HO44388**  
69.0625W | 72.125W



**HO51388**  
69.0625W | 72.125W



**HO54388**  
68.8125W | 71.625W



**HO65388**  
68.125W | 70.25W