

**CUSTOM CODE**

6

**STANDARD CASE PRICE**

	Oak	Maple	Cherry/Qsawn
W	\$2680	\$3090	\$3265
E	\$3485	\$4005	\$4300

**PREMIUM FINISH PRICE**

- \$ 15 Distressing
- \$ 240 Paint, Passages, Glaze, or Antique Detailing
- \$ 360 Combination, Glaze w/Olde World or Weathered

**DIMENSION INCREASE PRICE**

Do not include decrease inches to calculate price.

	2"	4"	6"	8"	10"	12"	14"	16"	18"	20"
	\$300	\$345	\$390	\$450	\$525	\$600	\$675	\$750	\$825	\$900

**STANDARD DIMENSIONS & CAPABILITIES**

<b>Minimum</b>	70H	30W	22.5D
<b>Standard</b>	80H	36W	22.5D
<b>Maximum</b>	96H*	46W*	28.5D

\* Refer to important Custom Notes below.

**OPENING HEIGHTS BY STYLE**

	06	11	17	20	33	44	51	54	65
A	22.5	22	22.5	22	20.5	21	21	22	22.5
B	47.5	45.75	48.25	47.5	47	47	47	47.25	48.25
B1	6	6	6	6	6	6	6	6	6
B2	25.5	25.5	25.5	25.5	25.5	25.5	25.5	25.5	25.5
B3	14.5	12.75	15.25	14.5	14	14	14	14.25	15.25

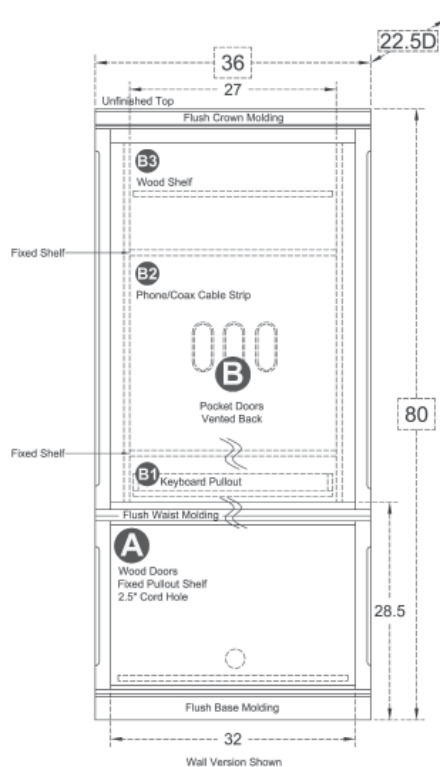
**IMPORTANT CUSTOM NOTES**

**If the height is increased to 84H or more**

- then a Split Horizontal (CAHZ02 \$330 | \$330 | \$330) will be added to create a two piece cabinet top and bottom.

**If the width is increased by 5W or more in Section A**

- then a Vertical Divider (CAVD24 \$120 | \$135 | \$150) will be added for support.



**Exterior View by Style** Standard size with molding on: 1 side | 2 sides



**HO0657**  
37.8125W | 39.625W



**HO1157**  
38.75W | 41.5W



**HO1757**  
37.625W | 39.25W



**HO2057**  
38.1875W | 40.375W



**HO3357**  
39.0625W | 42.125W



**HO4457**  
39.0625W | 42.125W



**HO5157**  
39.0625W | 42.125W



**HO5457**  
38.8125W | 41.625W



**HO6557**  
38.125W | 40.25W  
With optional Metro Legs (CAPL50) 82.5H