

CUSTOM CODE

2

STANDARD CASE PRICE

Oak	Maple	Cherry/Qsawn
\$915	\$1040	\$1135

PREMIUM FINISH PRICE

- \$ 15 Distressing
- \$ 105 Paint, Passages, Glaze, or Antique Detailing
- \$ 150 Combination, Glaze w/Olde World or Weathered

DIMENSION INCREASE PRICE

Do not include decrease inches to calculate price.

2"	4"	6"	8"	10"	12"	14"	16"	18"	20"
\$90	\$105	\$120	\$135	\$150	\$165	\$180	\$195	\$210	\$225

STANDARD DIMENSIONS & CAPABILITIES

Minimum	21H	18W	14.5D
Standard	see drawing	21W	18.5D
Maximum	40H	36W*	30.5D

* Refer to important Custom Notes below.

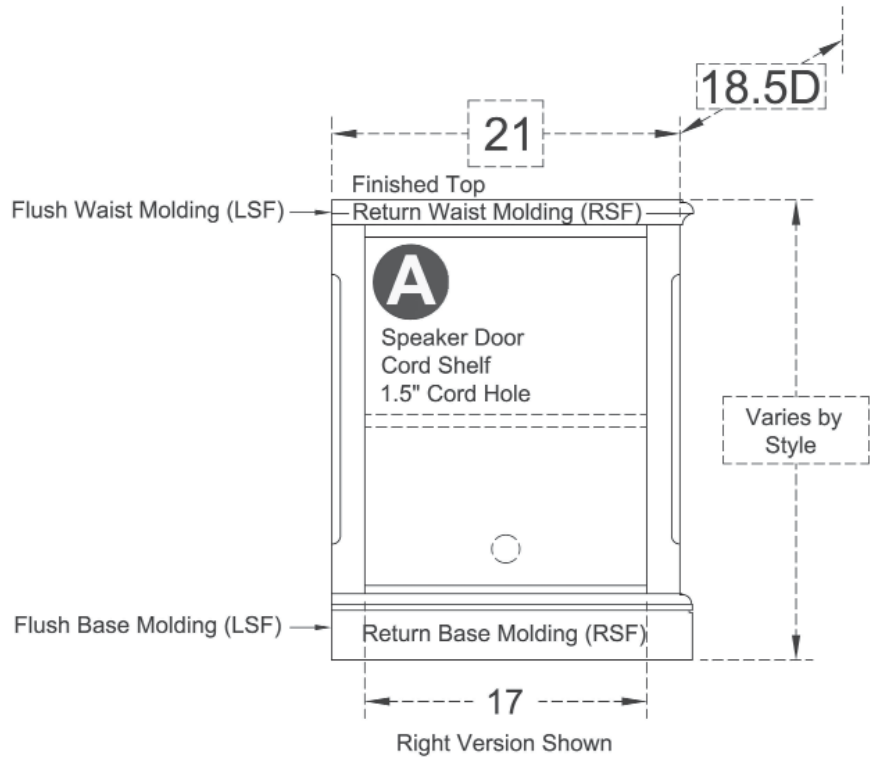
OPENING HEIGHTS BY STYLE

	06	11	17	20	33	44	51	54	65
A	22.3125	21.8125	22.3125	21.8125	20.3125	21	21	21.75	22.4375

IMPORTANT CUSTOM NOTES

If the width is increased by more than 6W in Section A

- then a Speaker Cloth Hinged Door (DOSP10 \$195 | \$225 | \$240) will be added to create a pair of doors.

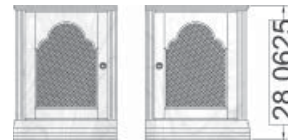


Exterior View by Style

Standard size with molding on: 1 side | 2 sides



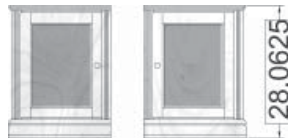
HT06056B
21.8125W | 22.625W



HT11056B
21.8125W | 22.625W



HT17056B
21.625W | 22.25W



HT20056B
21.8125W | 22.625W



HT33056B
22.125W | 23.25W



HT44056B
21.8125W | 22.625W



HT51056B
21.8125W | 22.625W



HT54056B
21.6875W | 22.375W



HT65056B
21.9375W | 22.875W
With optional Metro Legs (CAPL50)
30.1875H