

CUSTOM CODE

6

STANDARD CASE PRICE

Oak	Maple	Cherry/Qsawn
\$2710	\$3135	\$3450

PREMIUM FINISH PRICE

\$ 15 Distressing
 \$ 240 Paint, Passages, Glaze, or Antique Detailing
 \$ 360 Combination, Glaze w/Olde World or Weathered

DIMENSION INCREASE PRICE

Do not include decrease inches to calculate price.

2"	4"	6"	8"	10"	12"	14"	16"	18"	20"
\$300	\$345	\$390	\$450	\$525	\$600	\$675	\$750	\$825	\$900

STANDARD DIMENSIONS & CAPABILITIES

Minimum	70H	24.25W	15.125D
Standard	80H	28.25W	16.5D
Maximum	96H*	41W*	24.5D

* Refer to important Custom Notes below.

OPENING HEIGHTS BY STYLE

	06	11	17	20	33	44	51	54	65
A	22.5	22	22.5	22	20.5	21	21	22	22.5
B	47.25	45.5	48	47.25	46.75	46.75	46.75	47	48

IMPORTANT CUSTOM NOTES

If the width is increased by more than 5W in Section A

- then a Wood Hinged Door (DOWD10 \$240 | \$285 | \$315) will be added to create a pair of doors.

If the width is increased by more than 5W in Section B

- then a Glass Hinged Door (DOGL20 \$255 | \$300 | \$330) will be added to create a pair of doors.

If the height is increased to 84H or more

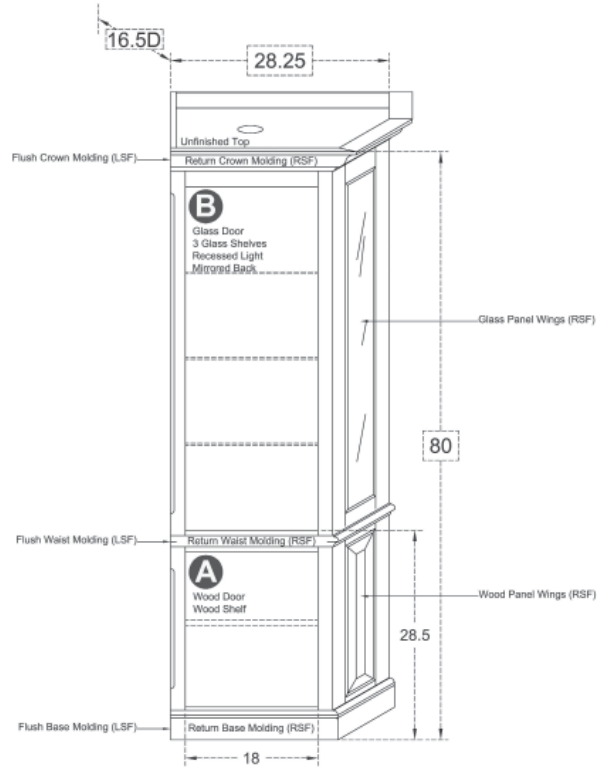
- then a Split Horizontal (CAHZ02 \$330 | \$330 | \$330) will be added to create a two piece cabinet top and bottom.

If the height is increased

- then the maximum opening height is 56H due to the mirror back.

If the width is increased by more than 13.5W in Section B

- then a Mirrored Back (CABA22 \$180 | \$180 | \$180) will be added.



Exterior View by Style

Standard size with molding on: 1 side | 2 sides



WU0687
30.0625W | 31.875W



WU1187
31W | 33.75W



WU1787
29.875W | 31.5W



WU2087
30.4375W | 32.625W



WU3387
31.3125W | 34.375W



WU4487
31.3125W | 34.375W



WU5187
31.3125W | 34.375W



WU5487
31.0625W | 33.875W



WU6587
30.375W | 32.5W