

CUSTOM CODE

3

STANDARD CASE PRICE

| | Oak | Maple | Cherry/Qsawn |
|---|--------|--------|--------------|
| W | \$1135 | \$1325 | \$1435 |
| C | \$1405 | \$1640 | \$1765 |
| E | \$1595 | \$1860 | \$2065 |

PREMIUM FINISH PRICE

\$ 15 Distressing
 \$ 135 Paint, Passages, Glaze, or Antique Detailing
 \$ 195 Combination, Glaze w/Olde World or Weathered

DIMENSION INCREASE PRICE

Do not include decrease inches to calculate price.

| | 2" | 4" | 6" | 8" | 10" | 12" | 14" | 16" | 18" | 20" |
|--|-------|-------|-------|-------|-------|-------|-------|-------|-------|-------|
| | \$135 | \$150 | \$165 | \$210 | \$255 | \$300 | \$345 | \$390 | \$420 | \$450 |

STANDARD DIMENSIONS & CAPABILITIES

| | | | |
|-----------------|-----|------|-------|
| Minimum | 40H | 47W | 12D |
| Standard | 50H | 66W | 12D |
| Maximum | 66H | 76W* | 22.5D |

* Refer to important Custom Notes below.

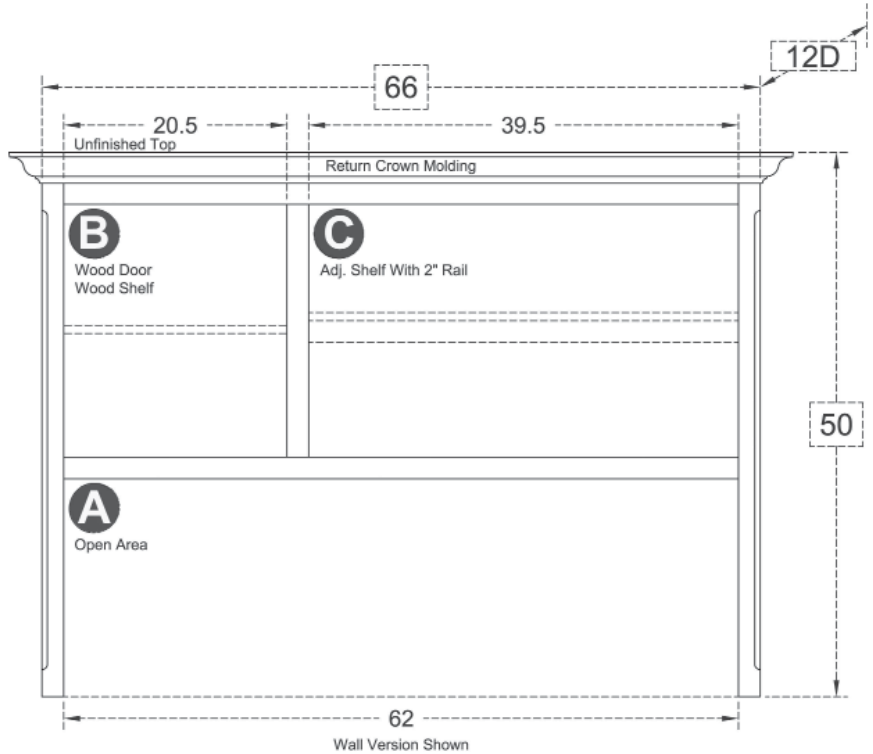
OPENING HEIGHTS BY STYLE

| | 06 | 11 | 17 | 20 | 33 | 44 | 51 | 54 | 65 |
|---|-------|--------|------|-------|-------|-------|-------|------|------|
| A | 20 | 20 | 20 | 20 | 20 | 20 | 20 | 20 | 20 |
| B | 23.75 | 22 | 24.5 | 23.75 | 23.25 | 23.25 | 23.25 | 23.5 | 24.5 |
| C | 21.25 | 17.875 | 22 | 23.75 | 23.25 | 23.25 | 23.25 | 23.5 | 24.5 |

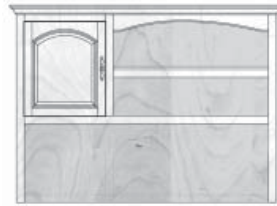
IMPORTANT CUSTOM NOTES

If the width is increased by more than 2.5W in Section B

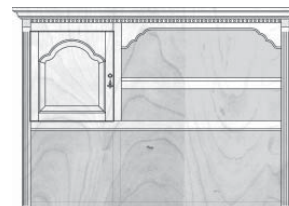
- then a Wood Hinged Door (DOWD10 \$240 | \$285 | \$315) will be added to create a pair of doors.



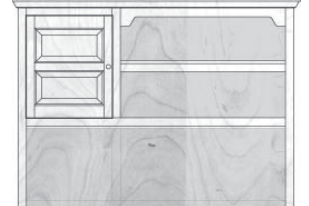
Exterior View by Style Standard size with molding on: 1 side | 2 sides



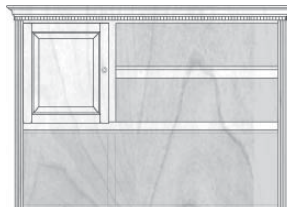
HO06386
67.8125W | 69.625W



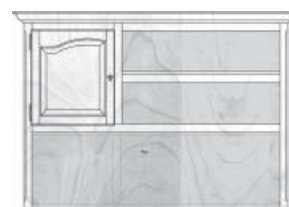
HO11386
68.75W | 71.5W



HO17386
67.625W | 69.25W



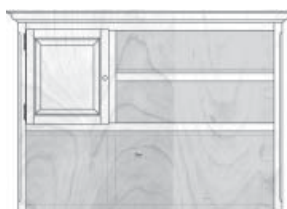
HO20386
68.1875W | 70.375W



HO33386
69.0625W | 72.125W



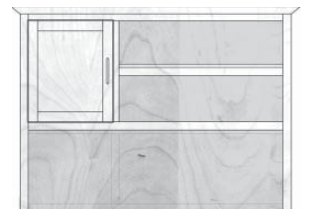
HO44386
69.0625W | 72.125W



HO51386
69.0625W | 72.125W



HO54386
68.8125W | 71.625W



HO65386
68.125W | 70.25W