

CUSTOM CODE

9

STANDARD CASE PRICE

Oak	Maple	Cherry/Qsawn
\$5060	\$5925	\$6380

PREMIUM FINISH PRICE

- \$ 15 Distressing
- \$ 360 Paint, Passages, Glaze, or Antique Detailing
- \$ 540 Combination, Glaze w/Olde World or Weathered

DIMENSION INCREASE PRICE

Do not include decrease inches to calculate price.

2"	4"	6"	8"	10"	12"	14"	16"	18"	20"
\$585	\$645	\$705	\$765	\$825	\$885	\$945	\$1005	\$1065	\$1125

STANDARD DIMENSIONS & CAPABILITIES

Minimum	70H	46W	22.5D
Standard	84H	55W	26.5D
Maximum	96H	68W*	32.5D

* Refer to important Custom Notes below.

OPENING HEIGHTS BY STYLE

	06	11	17	20	33	44	51	54	65
A	22.5	22	22.5	22	20.5	21	21	22	22.5
B	31.25	31.25	31.25	31.25	31.25	31.25	31.25	31.25	31.25
C	15.5	12.125	16.25	18	17.5	17.5	17.5	17.75	18.75
D	22.5	22	22.5	22	20.5	21	21	22	22.5
E	22.5	22	22.5	22	20.5	21	21	22	22.5

IMPORTANT CUSTOM NOTES

If the width is increased by more than 11.5W in Section E

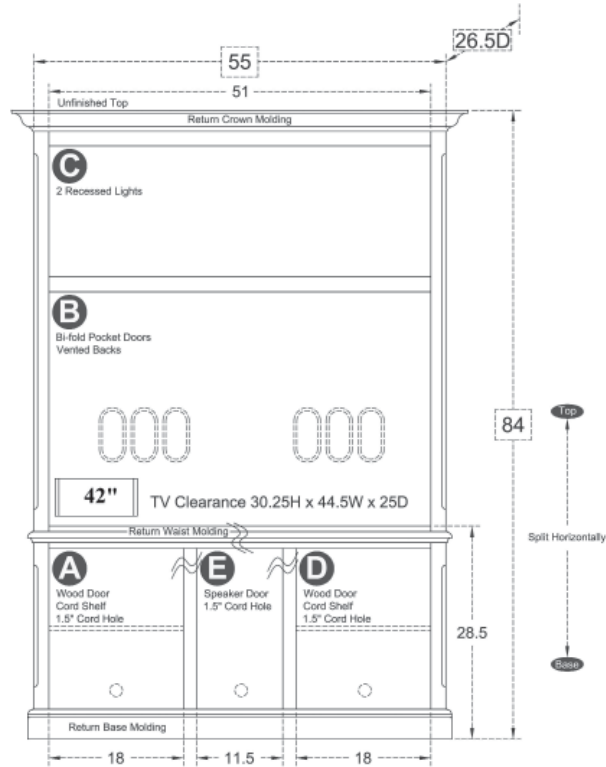
- then a Speaker Cloth Hinged Door (DOSP10 \$195 | \$225 | \$240) will be added to create a pair of doors.

If the width is increased by more than 5W in Section A or D

- then a Wood Hinged Door (DOWD10 \$240 | \$285 | \$315) will be added to create a pair of doors.

When Increasing or Decreasing the Width or Depth of this Cabinet

- then refer to the Pocket and Bi-fold Door Chart in Options Price Book to make sure the doors retract fully.



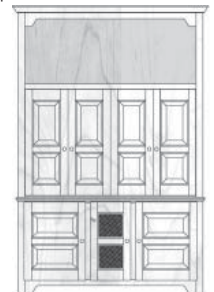
Exterior View by Style Standard size with molding on: 1 side | 2 sides



HT06042
56.8125W | 58.625W



HT11042
57.75W | 60.5W



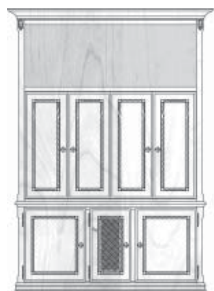
HT17042
56.625W | 58.25W



HT20042
57.1875W | 59.375W



HT33042
58.0625W | 61.125W



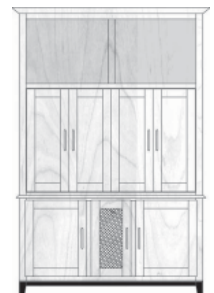
HT44042
58.0625W | 61.125W



HT51042
58.0625W | 61.125W



HT54042
57.8125W | 60.625W



HT65042
57.125W | 59.25W
With optional Metro Legs (CAPL70) 86.5H