

CUSTOM CODE

3

STANDARD CASE PRICE

Oak	Maple	Cherry/Qsawn
\$1815	\$2115	\$2320

PREMIUM FINISH PRICE

- \$ 15 Distressing
- \$ 135 Paint, Passages, Glaze, or Antique Detailing
- \$ 195 Combination, Glaze w/Olde World or Weathered

DIMENSION INCREASE PRICE

Do not include decrease inches to calculate price.

2"	4"	6"	8"	10"	12"	14"	16"	18"	20"
\$135	\$150	\$165	\$210	\$255	\$300	\$345	\$390	\$420	\$450

STANDARD DIMENSIONS & CAPABILITIES

Minimum	70H	22W	12D
Standard	80H	36W	16.5D
Maximum	96H*	48W*	24.5D

* Refer to important Custom Notes below.

OPENING HEIGHTS BY STYLE

	06	11	17	20	33	44	51	54	65
A	22.5	22	22.5	22	20.5	21	21	22	22.5
B	44.75	41.375	45.5	47.25	46.75	46.75	46.75	47	48

IMPORTANT CUSTOM NOTES

If the height is increased to 84H or more

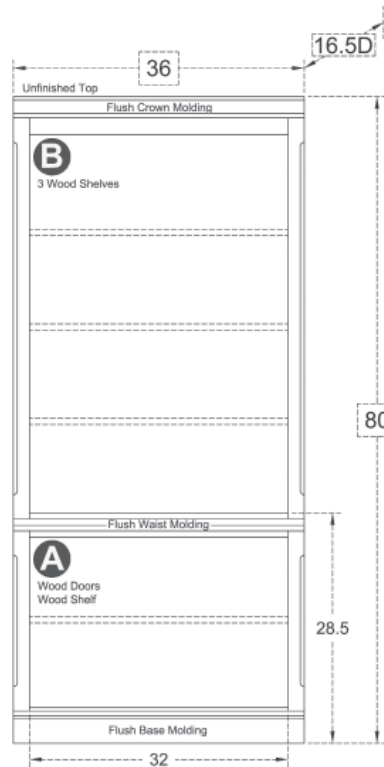
- then a Split Horizontal (CAHZ02 \$330 | \$330 | \$330) will be added to create a two piece cabinet top and bottom.

If the width is increased by 5W or more in Section A

- then a Vertical Divider (CAVD24 \$120 | \$135 | \$150) will be added for support. The standard shelves will automatically be split so that there are shelves on each side of the Vertical Divider. There is no charge for splitting the shelves.

If the width is increased by 5W or more in Section B

- then a Vertical Divider (CAVD26 \$180 | \$210 | \$240) will be added for support. The standard shelves will automatically be split so that there are shelves on each side of the Vertical Divider. There is no charge for splitting the shelves.



Exterior View by Style Standard size with molding on: 1 side | 2 sides



WU0603
37.8125W | 39.625W



WU1103
38.75W | 41.5W



WU1703
37.625W | 39.25W



WU2003
38.1875W | 40.375W



WU3303
39.0625W | 42.125W



WU4403
39.0625W | 42.125W



WU5103
39.0625W | 42.125W



WU5403
38.8125W | 41.625W



WU6503
38.125W | 40.25W
With optional Metro Legs (CAPL50) 82.5H