

CUSTOM CODE

2

STANDARD CASE PRICE

Oak	Maple	Cherry/Qsawn
\$930	\$1075	\$1185

PREMIUM FINISH PRICE

\$ 15 Distressing
 \$ 105 Paint, Passages, Glaze, or Antique Detailing
 \$ 150 Combination, Glaze w/Olde World or Weathered

DIMENSION INCREASE PRICE

Do not include decrease inches to calculate price.

2"	4"	6"	8"	10"	12"	14"	16"	18"	20"
\$90	\$105	\$120	\$135	\$150	\$165	\$180	\$195	\$210	\$225

STANDARD DIMENSIONS & CAPABILITIES

Minimum	21H	22W	12D
Standard	see drawing	36W	16.5D
Maximum	40H	48W*	24.5D

* Refer to important Custom Notes below.

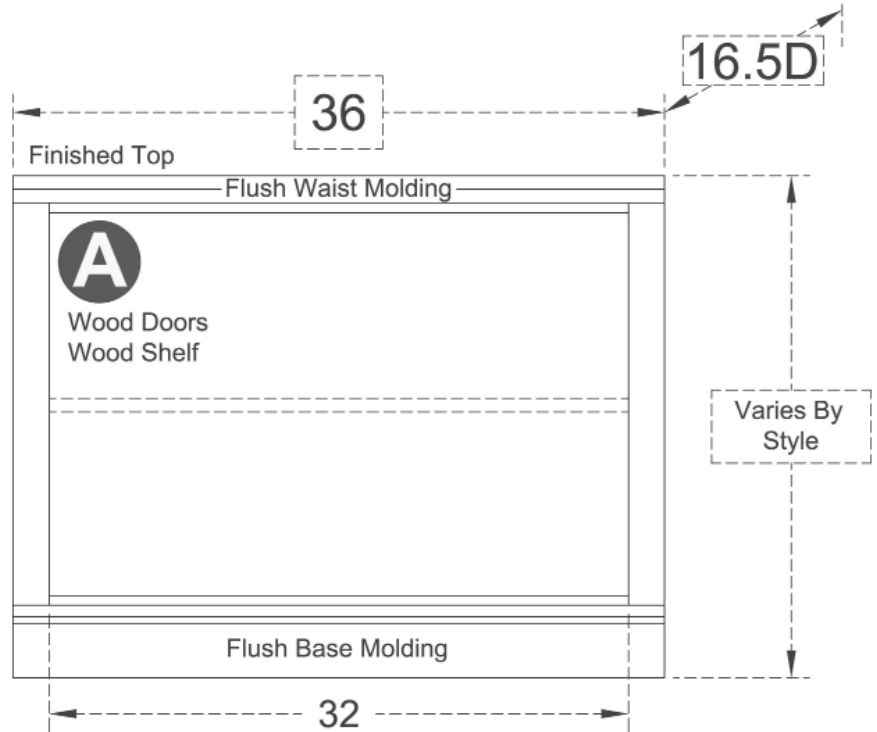
OPENING HEIGHTS BY STYLE

	06	11	17	20	33	44	51	54	65
A	22.3125	21.8125	22.3125	21.8125	20.3125	21	21	21.75	22.4375

IMPORTANT CUSTOM NOTES

If the width is increased by 5W or more in Section A

- then a Vertical Divider (CAVD24 \$120 | \$135 | \$150) will be added for support. The standard shelves will automatically be split so that there are shelves on each side of the Vertical Divider. There is no charge for splitting the shelves.



Exterior View by Style

Standard size with molding on: 1 side | 2 sides



WU0603B
36.8125W | 37.625W



WU1103B
36.8125W | 37.625W



WU1703B
36.625W | 37.25W



WU2003B
36.8125W | 37.625W



WU3303B
37.125W | 38.25W



WU4403B
36.8125W | 37.625W



WU5103B
36.8125W | 37.625W



WU5403B
36.6875W | 37.375W



WU6503B
36.9375W | 37.875W
With optional Metro Legs (CAPL50)
30.1875H