

MY CABINET DESIGN

CC_ _01L/R

1. DOOR & MOLDING STYLE CHOICE

- () 06 Wyndham Hill () 11 Pendelton () 17 Mill Creek
 () 20 Barrington () 33 Coventry () 44 Brighton Harbour
 () 51 American Traditions () 54 Horizons () 65 Harmony

2. WOOD CHOICE

- () Cherry () Maple () Oak () Quarter sawn Oak

3. FINISH Refer to store kiosk for finish colors.

- () Stain () Glazed Finish () Glazed Finish with Olde World Distressing
 () Passages Handrubbed Finish () Paint

Finish Name: _____

4. DISTRESSING

- () No Distressing
 () Distressing (random nicks & dents and wear sanded edges prior to finish)
 () Antique Detailing (random nicks, dents, wear sanded edges prior to finish, rasp marks, and worm holes)

included with Olde World or Passages finish selection above:

- () Olde World Distressing (random nicks, dents, wear sanded edges prior to finish, rasp marks, worm holes, gouges and glaze)
 () Passages Handrubbed Finish Distressing (random nicks, dents, wear sanded edges prior to finish, rasp marks, and worm holes)

5. LACQUER

- () Satin Lacquer () Flat Lacquer

6. HARDWARE

Number: _____ Description: _____

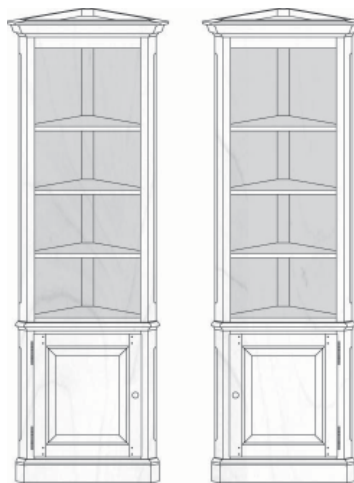
7. GLASS

- () None () Plain () Antique () Beveled () Brass Bevel Lead () Frosted
 () Lead () Mission Lead () Seeded () Straw () Wood Grills

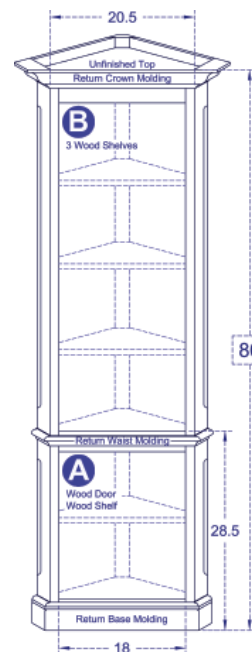
8. MOLDING

The Custom Shoppe will complete moldings between cabinets. Describe ends of grouping.

- () Molding on outside edges () No molding on outside edges
 () Other, describe: _____



(51) American Traditions shown, over for other styles



STANDARD DIMENSIONS AND CUSTOM CAPABILITIES

MINIMUM:	70H	12ATW	9.125D
STANDARD:	80.0H	16.50ATW	
MAXIMUM:	83.9375H (96H)	20ATW (24.5ATW)	19.375D

DIMENSIONS

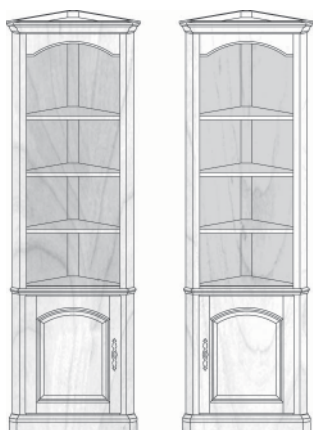
Review the standard cabinet dimensions above and note any changes required within minimum and maximum dimensions (fees apply) to accommodate your TV, components or wall.

OPTIONAL FEATURES

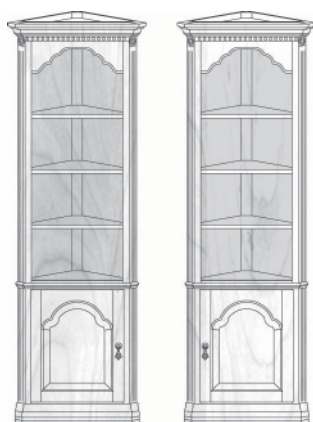
Extra shelves? Legs? Lighting? Cord Holes? Add or remove features for design ideas and storage needs.

ANYTHING ELSE?

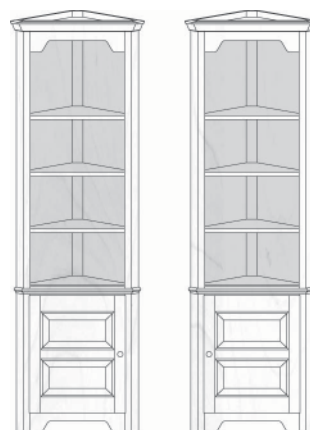
Is there something you need, that you cant find in our literature - write your ideas and questions here.



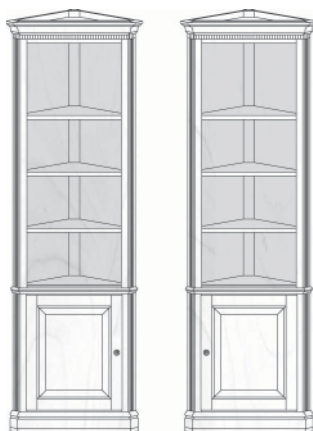
CC0601 L/R
18.3125ATW



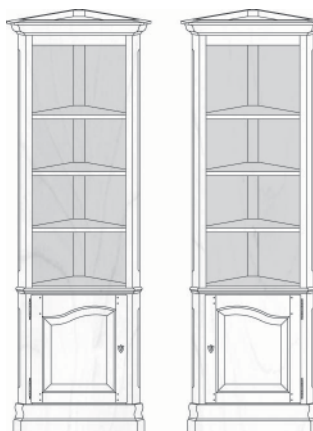
CC1101 L/R
19.25ATW



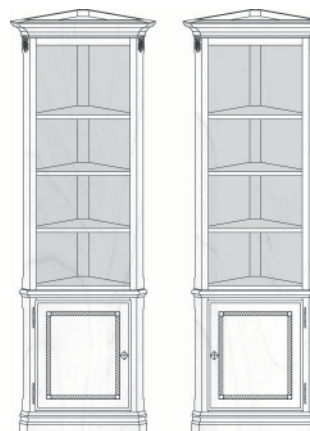
CC1701 L/R
18.125ATW



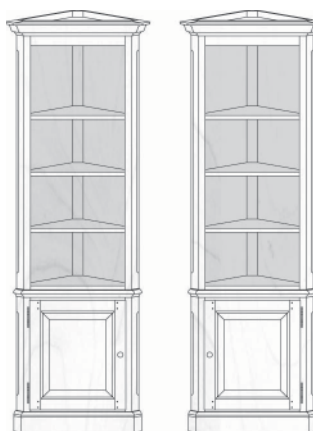
CC2001 L/R
18.6875ATW



CC3301 L/R
19.5625ATW



CC4401 L/R
19.5625ATW



CC5101 L/R
19.5625ATW



CC5401 L/R
19.3125ATW



CC6501 L/R
18.625ATW