

MY CABINET DESIGN

HO_ _84

1. DOOR & MOLDING STYLE CHOICE

- () 06 Wyndham Hill () 11 Pendelton () 17 Mill Creek
 () 20 Barrington () 33 Coventry () 44 Brighton Harbour
 () 51 American Traditions () 54 Horizons () 65 Harmony

2. WOOD CHOICE

- () Cherry () Maple () Oak () Quarter sawn Oak

3. FINISH Refer to store kiosk for finish colors.

- () Stain () Glazed Finish () Glazed Finish with Olde World Distressing
 () Passages Handrubbed Finish () Paint

Finish Name: _____

4. DISTRESSING

- () No Distressing
 () Distressing (random nicks & dents and wear sanded edges prior to finish)
 () Antique Detailing (random nicks, dents, wear sanded edges prior to finish, rasp marks, and worm holes)

included with Olde World or Passages finish selection above:

- () Olde World Distressing (random nicks, dents, wear sanded edges prior to finish, rasp marks, worm holes, gouges and glaze)
 () Passages Handrubbed Finish Distressing (random nicks, dents, wear sanded edges prior to finish, rasp marks, and worm holes)

5. LACQUER

- () Satin Lacquer () Flat Lacquer

6. HARDWARE

Number: _____ Description: _____

7. GLASS

- () None () Plain () Antique () Beveled () Brass Bevel Lead () Frosted
 () Lead () Mission Lead () Seeded () Straw () Wood Grills

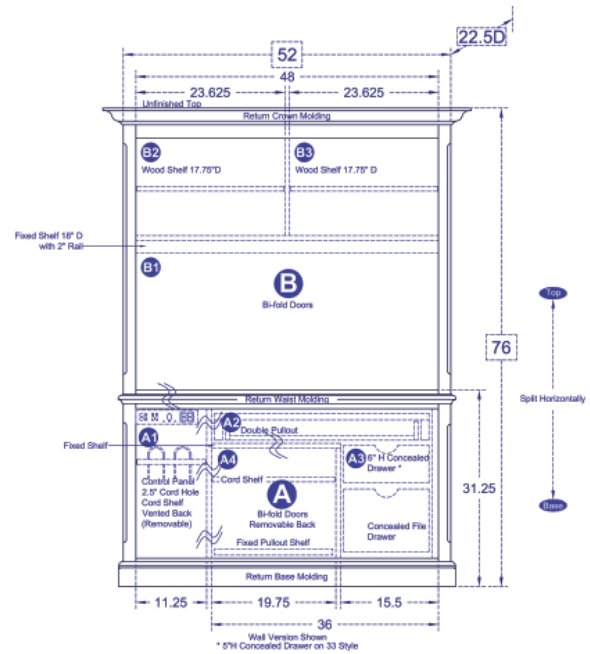
8. MOLDING

The Custom Shoppe will complete moldings between cabinets. Describe ends of grouping.

- () Molding on outside edges () No molding on outside edges
 () Other, describe: _____



(51) American Traditions shown, over for other styles



Back options for this cabinet:

- () W - Wall Back: Unfinished back
 () E - Exec. Wall Back: Unfinished back raised ranel sides

STANDARD DIMENSIONS AND CUSTOM CAPABILITIES

MINIMUM:	70H	52W	22.5D
STANDARD:	76.0H	52.0W	22.5D
MAXIMUM:	96H	52W	28.5D

DIMENSIONS

Review the standard cabinet dimensions above and note any changes required within minimum and maximum dimensions (fees apply) to accommodate your TV, components or wall.

OPTIONAL FEATURES

Extra shelves? Legs? Lighting? Cord Holes? Add or remove features for design ideas and storage needs.

ANYTHING ELSE?

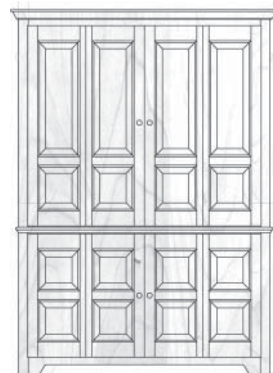
Is there something you need, that you cant find in our literature - write your ideas and questions here.



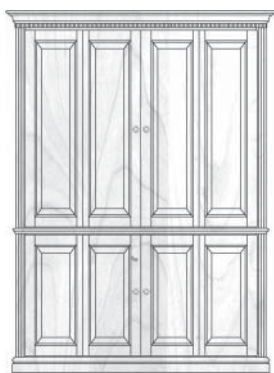
HO0684
53.8125W | 55.625W



HO1184
54.75W | 57.5W



HO1784
53.625W | 55.25W



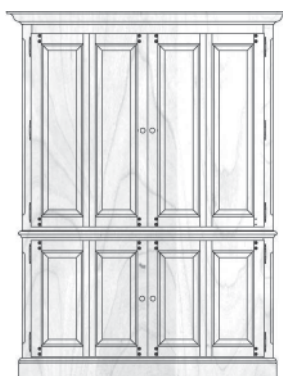
HO2084
54.1875W | 56.375W



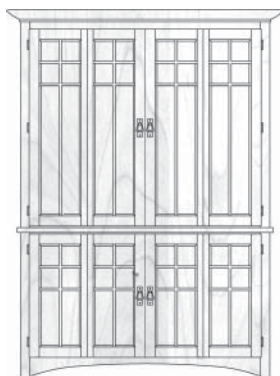
HO3384
55.0625W | 58.125W



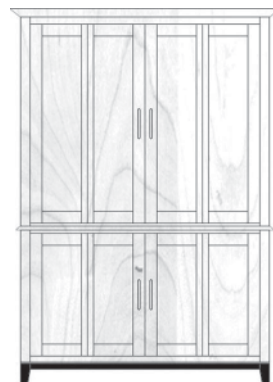
HO4484
55.0625W | 58.125W



HO5184
55.0625W | 58.125W



HO5484
54.8125W | 57.625W



HO6584
54.125W | 56.25W
Optional Metro Legs: CAPL50 78.5H