

# MY CABINET DESIGN

HT\_ \_604

## 1. DOOR & MOLDING STYLE CHOICE

- ( ) 06 Wyndham Hill      ( ) 11 Pendelton      ( ) 17 Mill Creek  
 ( ) 20 Barrington      ( ) 33 Coventry      ( ) 44 Brighton Harbour  
 ( ) 51 American Traditions      ( ) 54 Horizons      ( ) 65 Harmony

## 2. WOOD CHOICE

- ( ) Cherry    ( ) Maple    ( ) Oak    ( ) Quarter sawn Oak

## 3. FINISH Refer to store kiosk for finish colors.

- ( ) Stain    ( ) Glazed Finish    ( ) Glazed Finish with Olde World Distressing  
 ( ) Passages Handrubbed Finish    ( ) Paint

Finish Name: \_\_\_\_\_

## 4. DISTRESSING

- ( ) No Distressing  
 ( ) Distressing (random nicks & dents and wear sanded edges prior to finish)  
 ( ) Antique Detailing (random nicks, dents, wear sanded edges prior to finish, rasp marks, and worm holes)

included with Olde World or Passages finish selection above:

- ( ) Olde World Distressing (random nicks, dents, wear sanded edges prior to finish, rasp marks, worm holes, gouges and glaze)  
 ( ) Passages Handrubbed Finish Distressing (random nicks, dents, wear sanded edges prior to finish, rasp marks, and worm holes)

## 5. LACQUER

- ( ) Satin Lacquer    ( ) Flat Lacquer

## 6. HARDWARE

Number: \_\_\_\_\_ Description: \_\_\_\_\_

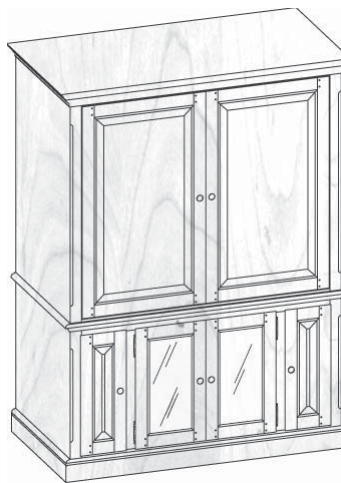
## 7. GLASS

- ( ) None    ( ) Plain    ( ) Antique    ( ) Beveled    ( ) Brass Bevel Lead    ( ) Frosted  
 ( ) Lead    ( ) Mission Lead    ( ) Seeded    ( ) Straw    ( ) Wood Grills

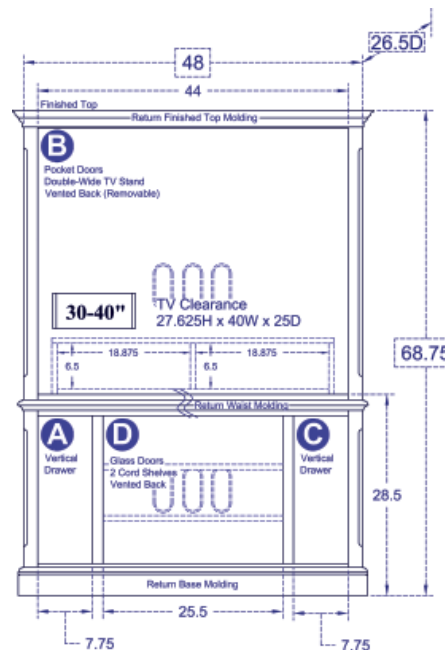
## 8. MOLDING

The Custom Shoppe will complete moldings between cabinets. Describe ends of grouping.

- ( ) Molding on outside edges    ( ) No molding on outside edges  
 ( ) Other, describe: \_\_\_\_\_



(51) American Traditions shown, over for other styles



### STANDARD DIMENSIONS AND CUSTOM CAPABILITIES

<b>MINIMUM:</b>	48H	40W	22.5D
<b>STANDARD:</b>	68.75H	48.0W	26.5D
<b>MAXIMUM:</b>	72H	48W	32.5D

### DIMENSIONS

Review the standard cabinet dimensions above and note any changes required within minimum and maximum dimensions (fees apply) to accommodate your TV, components or wall.

### OPTIONAL FEATURES

Extra shelves? Legs? Lighting? Cord Holes? Add or remove features for design ideas and storage needs.

### ANYTHING ELSE?

Is there something you need, that you cant find in our literature - write your ideas and questions here.



**HT06604**  
49.625W | 51.25W



**HT11604**  
49.625W | 51.25W



**HT17604**  
49.625W | 51.25W



**HT20604**  
49.625W | 51.25W



**HT33604**  
49.625W | 51.25W



**HT44604**  
49.625W | 51.25W



**HT51604**  
49.625W | 51.25W



**HT54604**  
49.625W | 51.25W  
Shown with optional Mission Glass.



**HT65604**  
49.25W | 50.5W  
Optional Metro Legs: CAPL50 71.25H