

# MY CABINET DESIGN

HT\_ \_672L/R

## 1. DOOR & MOLDING STYLE CHOICE

- ( ) 06 Wyndham Hill      ( ) 11 Pendelton      ( ) 17 Mill Creek  
 ( ) 20 Barrington      ( ) 33 Coventry      ( ) 44 Brighton Harbour  
 ( ) 51 American Traditions      ( ) 54 Horizons      ( ) 65 Harmony

## 2. WOOD CHOICE

- ( ) Cherry    ( ) Maple    ( ) Oak    ( ) Quarter sawn Oak

## 3. FINISH Refer to store kiosk for finish colors.

- ( ) Stain    ( ) Glazed Finish    ( ) Glazed Finish with Olde World Distressing  
 ( ) Passages Handrubbed Finish    ( ) Paint

Finish Name: \_\_\_\_\_

## 4. DISTRESSING

- ( ) No Distressing  
 ( ) Distressing (random nicks & dents and wear sanded edges prior to finish)  
 ( ) Antique Detailing (random nicks, dents, wear sanded edges prior to finish, rasp marks, and worm holes)

included with Olde World or Passages finish selection above:

- ( ) Olde World Distressing (random nicks, dents, wear sanded edges prior to finish, rasp marks, worm holes, gouges and glaze)  
 ( ) Passages Handrubbed Finish Distressing (random nicks, dents, wear sanded edges prior to finish, rasp marks, and worm holes)

## 5. LACQUER

- ( ) Satin Lacquer    ( ) Flat Lacquer

## 6. HARDWARE

Number: \_\_\_\_\_ Description: \_\_\_\_\_

## 7. GLASS

- ( ) None    ( ) Plain    ( ) Antique    ( ) Beveled    ( ) Brass Bevel Lead    ( ) Frosted  
 ( ) Lead    ( ) Mission Lead    ( ) Seeded    ( ) Straw    ( ) Wood Grills

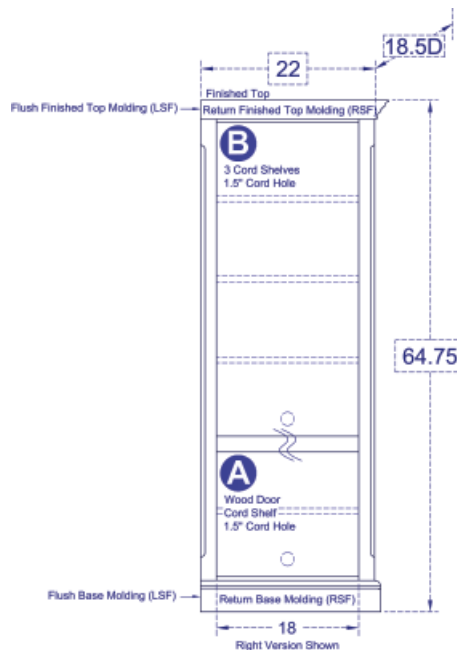
## 8. MOLDING

The Custom Shoppe will complete moldings between cabinets. Describe ends of grouping.

- ( ) Molding on outside edges    ( ) No molding on outside edges  
 ( ) Other, describe: \_\_\_\_\_



(51) American Traditions shown, over for other styles



### STANDARD DIMENSIONS AND CUSTOM CAPABILITIES

|                  |        |           |       |
|------------------|--------|-----------|-------|
| <b>MINIMUM:</b>  | 48H    | 18W       | 14.5D |
| <b>STANDARD:</b> | 64.75H | 22.0W     | 18.5D |
| <b>MAXIMUM:</b>  | 69H    | 27W (32W) | 28.5D |

## DIMENSIONS

Review the standard cabinet dimensions above and note any changes required within minimum and maximum dimensions (fees apply) to accommodate your TV, components or wall.

## OPTIONAL FEATURES

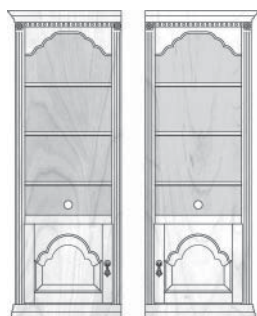
Extra shelves? Legs? Lighting? Cord Holes? Add or remove features for design ideas and storage needs.

## ANYTHING ELSE?

Is there something you need, that you cant find in our literature - write your ideas and questions here.



HT06672 L/R  
23.625W | 25.25W



HT11672 L/R  
23.625W | 25.25W



HT17672 L/R  
23.625W | 25.25W



HT20672 L/R  
23.625W | 25.25W



HT33672 L/R  
23.625W | 25.25W



HT44672 L/R  
23.625W | 25.25W



HT51672 L/R  
23.625W | 25.25W



HT54672 L/R  
23.625W | 25.25W



HT65672 L/R  
23.25W | 24.5W  
Optional Metro Legs: CAPL50 67.25H